

These plans are an instrument of service and are the property of the Architect, and may not be duplicated, disclosed, or reproduced without the written consent of the Architect. Copyrights and Infringements will be enforced and prosecuted.

DNA
 DAN NAIMAN ARCHITECTURE
 104 MILL STREET
 BAYFIELD, CO 81122
 (970) 905-4002
 DANADESIGNS.NET

FOREST LAKES METRO DISTRICT
 COMMUNITY CENTER
 99B ALPINE FOREST DR. / BAYFIELD, COLORADO

REFLECTED CEILING
 PLAN

DATE ISSUED:
4-1-20

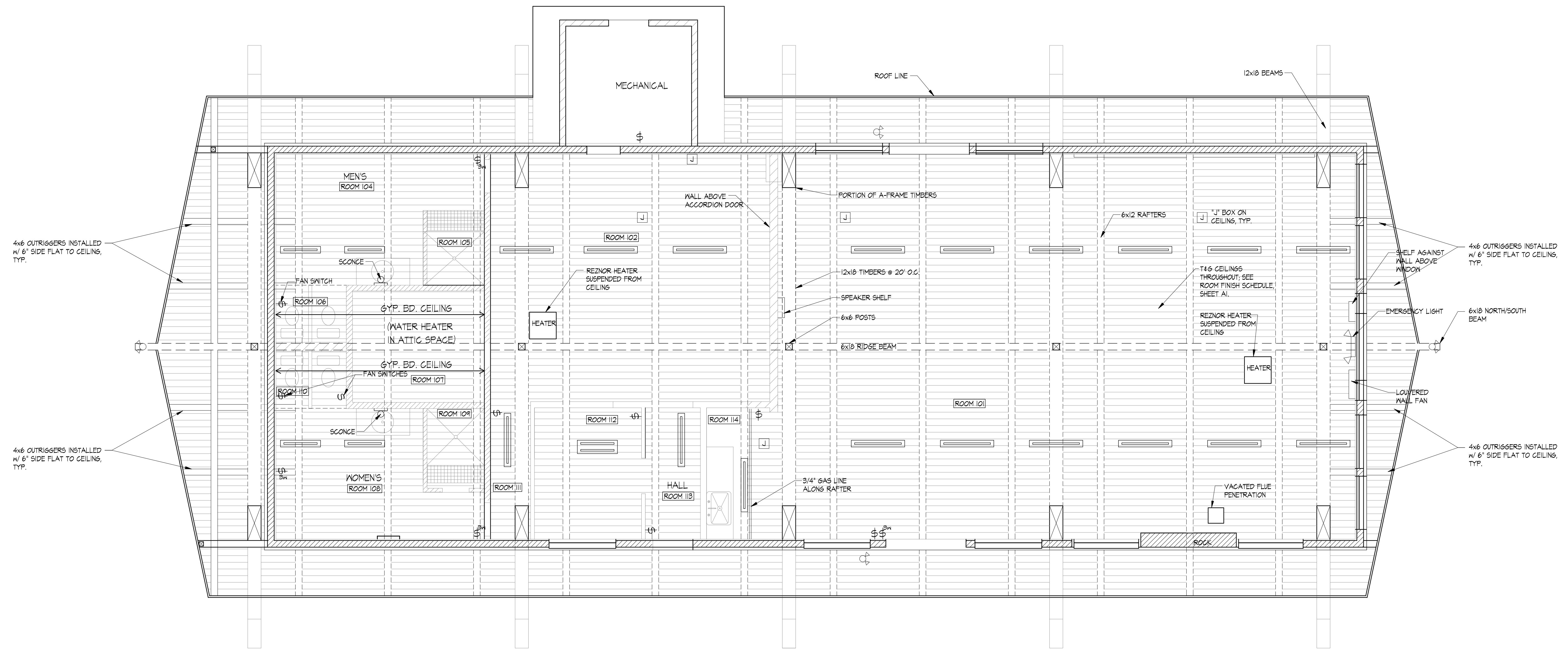
DRAWN BY:
CE

CHECKED BY:
DNA

REVISIONS

NO.	DESCRIPTION

A-2



REFLECTED CEILING PLAN
 1/4"=1'-0"

ELECTRICAL SYMBOLS			
⌚	WALL SWITCH	220V	220 V OUTLET
⌚	3-WAY SWITCH	⌚	POWER DISTRIBUTION PANEL
⌚	DECORATIVE EXT. WALL SCONCE	⊙	SMOKE DETECTOR
⊙	CEILING LIGHT FIXTURE	⊙	CARBON MONOXIDE DETECTOR
⌚	4' LED STRIP LIGHT	▶	TELEPHONE JACK
⊙	CONVENIENCE OUTLET	⊙	GAS CONNECTION
⊙	OUTLET w/ HEIGHT	⊙	EXHAUST FAN & LIGHT
⊙	SURFACE MOUNTED OUTLET	⊙	THERMOSTAT
⊙	GROUND FAULT INTERRUPTOR	⊙	EMERGENCY LIGHT
⊙	WATER-PROOF OUTLET	⊙	SAUNA THERMOSTAT
⊙	RECESSED CAN	⊙	FIRE EXTINGUISHER
⊙	JUNCTION BOX	⊙	INCANDESCENT FLOOD LIGHT